



Midwest Art History Society NEWSLETTER

Number 33 Fall 2006

MAHS Conference 2007, Indianapolis, Indiana, March 28-31, 2007

The Midwest Art History Society's 34th annual meeting will be held March 28-31, 2007 in Indianapolis. The primary hosting institution is the Herron School of Art and Design at Indiana University-Purdue University at Indianapolis. Co-hosts for the meeting are the Indianapolis Museum of Art and the Eiteljorg Museum of American Indians and Western Art. All three institutions feature new facilities built within the past two years, with expanded gallery spaces at each.

In addition to a full range of topical session held at the three hosting sites, this year's conference will feature a number of special events keyed to the collections and exhibitions in view in Indianapolis. The conference kicks off Wednesday evening with a reception and lecture at Herron. Lisa Freiman, curator of contemporary art at the IMA, will speak on the early work of Claes Oldenburg. Thursday's program emphasizes the Indianapolis Museum of Art. After morning sessions at Herron, busses will take conference participants to the IMA for the business lunch, followed by sessions and a reception at the museum. An evening lecture by Nancy Yeide of the National Gallery of Art on questions of provenance, sponsored by the Indianapolis Museum of Art, will be a highlight of the day. The Friday morning program includes a plenary round table discussion on the theme of "New Perspectives in Global Art History."

Following afternoon sessions at the Eiteljorg Museum, the conference will culminate in an exciting keynote event on Friday evening: a performance by renowned Native American performance artist James Luna. The Friday events are supported by a grant through the Indiana University "New Frontiers in the Arts and Humanities" program.

Indianapolis offers many attractions for visitors interested in the arts. Special exhibitions on view during the conference include "Maria Magdalena Campos-Pons: Everything is Separated by Water" and "AfroCuba: Works on Paper, 1968-2003" at the IMA. The Eiteljorg will be showing western-themed work by pop artists Andy Warhol and Roy Lichtenstein.

"Ed Paschke Nonplussed: 1967-2004" will be on view at the Herron Galleries. Additional art spaces around the city include the Indianapolis Museum of Contemporary art (iMOCA), the gallery districts on Massachusetts Avenue and in Fountain Square, and the Indianapolis Arts Center.

Registration forms and travel and lodging information are available in the back pages of this newsletter and online at the MAHS website. Proposals for papers are due by December 15 to the session chairs. The call for papers is included in this newsletter and is also available online. To receive the early bird rate for conference registration, please register by February 23.



Eskenazi Hall, Herron School of Art and Design, Indianapolis, Indiana
© IU Herron School of Art and Design



MAHS News and Announcements

The Allen Memorial Art Museum, Oberlin College, has recently acquired several significant works on paper, including Jean-Baptiste Oudry, *A Bear Seen from Behind*, 1720s, Thomas Couture, *Study for the Enrollment of the Volunteers, 1792*, c. 1847, and April Gornik, *Winding Trees*, 2005.

The Cincinnati Art Museum has adopted a facilities master plan that will shape the growth of the museum over the next twenty years. These recommendations are expected to address the need to enhance access to the Museum for the entire community both in virtual and physical ways.

The Museum of Contemporary Art Cleveland has selected six finalists for the design of its new building, scheduled to be built near the Case Western Reserve University campus.

The Fred Jones Jr. Museum of Art, University of Oklahoma, Norman, Oklahoma, has received a gift of eleven paintings from the collection of Jerome M. Westheimer Sr. The gift includes works by Ivan Albright and Charles Burchfield.

The Frederik Meijer Gardens and Sculpture Park recently installed a new, colossal sculpture by Kenneth Snelson – *B-Tree II*.

The University of Iowa Museum of Art has recently acquired a Sande society mask from the Gola people. It is currently on view in the Museum's Maxwell and Elizabeth Stanley Gallery.

Another major expansion has been announced, this time by the **Kelsey Museum of Archaeology**. The new 17,000 square foot addition, designed by Hammon Beeby Rupert Ainge Inc., is made possible by a major gift of Edwin and Mary Meader of Kalamazoo, Michigan. Construction will begin in November 2006.

The Kimbell Art Museum has recently acquired a terracotta relief attributed to the Italian Renaissance artist Donatello. The relief, c. 1450, is known as *The Borromeo Madonna*. Additional acquisitions include two works of Japanese art; an eighth century lacquer mask and a scroll painting from the 1700s.

The University of Michigan Museum of Art has broken ground for the expansion and renovation of its spaces. Included in the project will be the construction of a 53,000 square-foot addition designed by principal architect Brad Cloepfil and his firm Allied Works Architecture of Portland, Oregon. Until Fall 2008, the Museum is operating a temporary exhibition space called UMMA Off/Site. Located immediately adjacent to the University's central campus, the gallery will present exhibitions devoted to photography, film and video. The museum has also received a \$1 million pledge from Dr. Cheng-Yand Change in honor of his recently deceased wife, Shirley, to be recognized in the naming of The Shirley Chang Gallery of Chinese Art in the new addition.

The Minneapolis Institute of Arts opened its new wing in June, 2006. Designed by Michael Graves, the structure is 113,000 square feet. With the expansion, the Institute's permanent collection has been reinstalled. As part of the changes associated with these projects the Institute and the **Walker Art Center** are collaborating to exchange artworks and develop public programs inspired by each institution's collections.

The Saint Louis Art Museum reopened its renovated Early European Galleries on September 15, 2006, the culmination of a four-year project to review and upgrade the presentation of the collection. The Museum was awarded a Samuel H. Kress Foundation "Old Masters in Context" grant to research and plan the reinstillation of the Medieval collection in June, 2002. Using a more contextual approach for the entire collection, the reinstillation team, headed by Early European Curator Judith Mann and Research Assistant Erika TenEyck, has provided more extensive interpretation, included more sculpture, and added objects that have not been on view for many years. The Museum has also recently acquired several Early Modern paintings including Hans Mielich's *Portrait of a Gentleman* and *Portrait of a Lady* from 1540/1.

The Toledo Museum of Art opened its new Glass Pavilion to the public on August 27, 2006. Designed by Tokyo-based architects Sejima and Nishizawa and Associates, the building features exterior and most interior walls made entirely of curved glass.

The Woodson Art Museum has acquired three Wyeth paintings – one by NC, one by Andrews and one by Jamie. Director Kathy Foley explained that the Museum is "most grateful to the Nancy Woodson Spire Foundation for making these acquisitions possible."

Visit the MAHS website www.mahsonline.org

The MAHS website now is being updated on a much more regular basis. New features include a list of current and upcoming "Exhibitions in the Midwest" that is updated twice annually, and a positions listing for job openings in the field at the "MAHS Online Career Center." Also, relive the history of MAHS with the photo gallery archives.



Upcoming Conferences, Symposia, & Workshops

Outstanding Exhibition Catalogue Award

A symposium titled "The Art Museum and the Photograph" will be held at the *Wichita Art Museum*, Sunday, October 29, 2006 from 2:00 to 6:00 pm. The scheduled speakers include Robert Dance and Toby Jurovics.

The conference "Constructions of Death, Morning, and Memory," sponsored by the WAPACC Organization in Woodcliff Lake, New Jersey, will be held October 27-29, 2006. The session "Representations of Death in Ancient and Medieval Art" will be chaired by Marilyn Dunn, *Loyola University Chicago*.

The *University of Iowa Museum of Art* is sponsoring a symposium November 10-12, 2005, in conjunction with the exhibition *Whitman Making Books/Books Making Whitman*. Ezra Greenspan, Kahn Chair of the Humanities and Professor of English at Southern Methodist University, is keynote speaker. For more information see www.uiowa.edu/uima.

The 25th Annual Lilly Conference on College Teaching, will be held on November 17-20, 2005 at *Miami University*, Oxford, Ohio. The conference will include a panel presentation led by Andrew E. Hershberger, Bowling Green State University.

The *Kimbell Art Museum* will hold a symposium Saturday, February 11, 2006, in conjunction with the exhibition *Gauguin and Impressionism*. This daylong symposium will be moderated by the exhibition's co-curator Richard R. Brettell.

The *Snite Museum of Art*, Notre Dame University, will host "The Acquisition and Exhibition of Classical Antiquities: Professional, Legal, and Ethical Perspectives," on Saturday, February 24, 2007. The presentations will consider a variety of perspectives on the topic, as well as case studies. Scheduled speakers include James Cuno, Malcolm Bell, Patty Girstenblith, Mary Ellen O'Connell, Nancy Bookidis, Robin Rhodes and Stefano Vassallo. For more information see www.nd.edu/~sniteart

Winner of the Midwest Art History Society Award for Outstanding Exhibition Catalogue — Bits & Pieces Put Together to Present a Semblance of a Whole: Walker Art Center Collections

The Midwest Art History Society Board of Directors is pleased to announce the winner of the award for Outstanding Exhibition Catalogue, which includes collection catalogues – *Bits & Pieces Put Together to Present a Semblance of a Whole: Walker Art Center Collections*, John Rothfuss and Elizabeth Carpenter, 2005.

Many wonderful catalogues were submitted, and only after careful review and deliberation did the Award Committee, Leesa Fanning (chair), Joseph Becherer, and Robin Clark, select *Bits & Pieces Put Together to Present a Semblance of a Whole: Walker Art Center Collections*.

Selection of the Outstanding Exhibition Catalogue was based on the conception of the exhibition, contributions to contemporary scholarship, and excellence in design.

This represents the second year of the award for Outstanding Exhibition Catalogue. The Call for Nominations for catalogues produced in 2006 will be sent out this November, with a deadline for submissions in February. The winner of the 2006 award will be announced at the annual Midwest Art History Society meeting in March, 2007.

The MAHS Newsletter and ListServ are vital methods of communicating to the membership. We must have current home/business and e-mail addresses in order to reach you with news items and membership business. Please contact Coleman.1@nd.edu immediately, if there are changes in your addresses.

Memberships and Renewals in the MAHS

There are five categories of membership in the Midwest Art History Society: *student* (\$25); *professional* (\$45); *institutional* (\$150); *sustaining* (\$100); and *patron* (\$75 or more). **Please note that dues are for a calendar year.** Anyone wishing to join the Society or to renew a membership should complete the following form, including your preferred e-mail address. Send it with a check payable to the Midwest Art History Society to **Robert Randolph Coleman, Treasurer:**

Your Name _____

Institutional Affiliation _____

Address Where You Want Materials Sent : _____

Street _____

City _____ Zip _____

Telephone/home _____ Telephone/work _____

Fax _____ E-mail _____

Robert Randolph Coleman
Department of Art, Art History
and Design
University of Notre Dame
109 Decio Faculty Hall
Notre Dame, IN 46556-5644



Current and Upcoming Exhibitions

Akron Art Museum—Akron, Ohio

www.akronartmuseum.org

Closed to the public during construction of new building.

Allen Memorial Art Museum, Oberlin College—Oberlin, Ohio

www.oberlin.edu/amam/

American Portraits from the Cleveland Museum of Art, through December 17, 2006

New Frontiers: American Art Since 1945, through December 23, 2006

Adolph Gottlieb: Early Prints from the Adolph and Esther Gottlieb Foundation, November 7, 2006 – January 28, 2007

Simple Forms: Sol LeWitt at the Allen, February 27 – June 17, 2007

Art Institute of Chicago—Chicago, Illinois

www.artic.edu

The Silk Road and Beyond: Travel, Trade, and Transformation, through April 1, 2007

Focus: Mel Bochner—Language 1966-2006, through January 7, 2007

Charles Sheeler: Across Media, January 7, 2007

Photographs by the Score: Personal Visions Twenty-Some Years Apart, through January 14, 2007

From Cezanne to Picasso: Ambroise Vollard, Patron of the Avant Garde, February 17 – May 13, 2007

Jeff Wall, June 30 — September 23, 2007

Richard Misrach: On the Beach, September 1 – November 11, 2007

Brunnier Art Museum—Ames, Iowa

www.museums.iastate.edu

When Tillage Begins, Other Arts Follow: Grant Wood and Christian Petersen Murals, through November 27, 2006

Cedar Rapids Museum of Art – Cedar Rapids, Iowa

www.crma.org

Rembrandt Magnified, through December 31, 2006

Centre College, Aegon Gallery—Danville, Kentucky

www.centre.edu

Chazen Museum of Art—Madison, Wisconsin

www.chazen.wisc.edu

Alexander Archipenko: Vision and Continuity, through

November 26, 2006

Russian Lacquer Boxes: A Narrative Tradition from the Frederick Seibold Collection, November 18, 2006 – January 14, 2007

Cincinnati Art Museum—Cincinnati, Ohio

www.cincinnatiartmuseum.org

Public Spectacles, Personal Pleasures: Four Centuries of Japanese Prints from a Cincinnati Collection, through December 17, 2006

Natural Moderns Georgia O'Keeffe and Her Contemporaries, through January 14, 2007

Andrew Wyeth Watercolors and Drawings: Selections from the Marunuma Art Park, Collection, Japan, February 3 – May 6, 2007

Museum of Contemporary Art Cleveland—Cleveland, Ohio

www.MOCAcleveland.org

Catherine Opie, through December 30, 2006

Dana Schutz: Paintings 2002-2006, through December 30, 2006

Olivo Barbieri: site-specific, through December 30, 2006

Cleveland Museum of Art—Cleveland, Ohio

www.clemusart.com

The museum is temporarily closed

Columbus Museum of Art—Columbus Ohio

www.columbusmuseum.org

Edgar Degas: The Last Landscapes, through January 21, 2007

Currents: May Lin, January 26 – April 29, 2007

OPTIC NERVE: Perceptual Art of the 1960s, February 16 – June 17, 2007

The Powerful Hand of George Bellows, Drawings from the Boston Public Library, July 13 – September 9, 2007

In Monet's Garden: The Lure of Giverny, October 12, 2007 – January 20, 2008

Contemporary Arts Center—Cincinnati, Ohio

www.contemporaryartscenter.org

The Paper Sculpture Show, through November 5, 2006

Cranbrook Art Museum—Bloomfield Hills, Michigan

www.cranbrookart.edu/museum

Space is the Place, November 18, 2006 – January 14, 2007

Shrinking Cities, February 3 – April 1, 2007

Gord Peteran: Furniture Meets Its Maker, February 3 – April 1, 2007

2007 Graduate Degree Exhibition of Cranbrook Academy of Art, April 22 – May 11, 2007

Eero Saarinen: Shaping the Future, November 17, 2007 – March 30, 2008

Dallas Museum of Art—Dallas, Texas

www.dm-art.org

Van Gogh: Sheaves of Wheat, through January 7, 2007

Matisse: Painter as Sculptor, January 21 – April 29, 2007

Fast Forward: Contemporary Collections for the Dallas Museum of Art, February 11 – May 20, 2007

Note

Future exhibition listings are encouraged at any time. Images with caption information are also welcome and encouraged. Send all information to Paula Wisotzki. If you are not a MAHS member, join us! Please fill out and return the convenient membership form in this newsletter.



Current and Upcoming Exhibitions (cont from page 4)

Detroit Institute of Arts—Detroit, Michigan

www.dia.org

Annie Leibovitz: American Music, through January 7, 2007
Worth a Thousand Words: Prints and Drawings Related to Books,
February 7 – May 27, 2007

University Art Gallery—Eastern Michigan University

www.emich.edu

Michigan Collects Ruth Weisberg, March 12 – April 17, 2007

Figge Art Museum—Davenport, Iowa

www.figgeartmuseum.org

Adventures in a Temperate Climate: Martin Mull, through January
21, 2007

Accidentally on Purpose: Improvisational African-American Quilts,
November 18, 2006 – February 11, 2007

Deborah Butterfield, March 3 – May 27, 2007

Fort Wayne Museum of Art—Fort Wayne, Indiana

www.fwmoa.org

Arte Caliente! The Joe A. Diaz Collection,
November 18, 2006 – January 28, 2007

Fred Jones Jr. Museum of Art—Norman, Oklahoma

www.ou.edu/fjjma

Photographs by Charles Henri Ford, through
December 31, 2006

Harold Stevenson: The Great Society, through
December 31, 2006

**Frederick Meijer Gardens and Sculpture Park—
Grand Rapids, Michigan**

www.meijergardens.org

Magdalena Abakanowicz: The Drawings, through
December 31, 2006

Gilcrease Museum—Tulsa, Oklahoma

www.gilcrease.org

John James Audubon, American Artist and Naturalist, through
January 1, 2007

**Haggerty Museum of Art, Marquette University,—Milwaukee,
Wisconsin**

www.marquette.edu/haggerty

Hockey Seen: A Nightmare in Three Periods and Sudden Death,
through January 14, 2007

Art and Conflicts in Central Asia, through January 21, 2007

*Marquette University Then and Now: Images Celebrating 125 Years
of Faith and Learning in Action*,
January 25 – March 25, 2007

Martin Kline, Recent Paintings and Sculptures,
February 1 – April 10, 2007

Wisconsin Artists Biennial, 2007, April 19 – July 15, 2007

Indianapolis Museum of Art—Indianapolis, Indiana

www.ima-art.org

The Architecture of Gee's Bend Quilts, through
December 31, 2006

Afro-Cuba: Works on Paper, 1968-2003, opens
February 25, 2007

Roman Art from the Louvre, opens September 23, 2007

Indiana University Art Museum—Bloomington, Indiana

www.indiana.edu/~iuam/iuam_home.php

*Conspiring with Tradition: Contemporary Painting from the Guilin
Chinese Painting Academy*, through December 17, 2006

University of Iowa Museum of Art—Iowa City, Iowa

www.uiowa.edu/~artmus

Animal Expressions: International Perspectives from the Collection,
through December 31, 2006.

Joslyn Art Museum—Omaha, Nebraska

www.joslyn.org

Legends of the West: The Foxley Collection,
November 11, 2006 – February 25, 2007

**Kelsey Museum of Archaeology, The University
of Michigan—Ann Arbor, Michigan**

www.lsa.umich.edu/kelsey/

Closed for renovation and expansion

**Kent State University, The Kent State University School
of Art Gallery—Kent, Ohio**

www.kent.edu/museum/

The Age of Nudity, through January 7, 2007

University of Kentucky Art Museum—Lexington, Kentucky

www.uky.edu/ArtMuseum

A Romance with the Landscape: Realism to Impressionism, through
December 10, 2006

Bound for Glory: America in Color, 1939-1943,
January 21 – April 15, 2007

Kimbell Art Museum—Fort Worth, Texas

www.kimbellart.org

Hatshepsut: From Queen to Pharaoh, through
December 31, 2006

*Drama and Desire: Japanese Paintings from the Floating World,
1690-1850*, February 11 – April 29, 2007

The Mirror and the Mask: Portraiture in the Age of Picasso, June 17
– September 16, 2007

Picturing the Bible: The Earliest Christian Art,
November 18, 2007 – March 30, 2008

Krannert Art Museum—Urbana-Champaign, Illinois

www.art.uiuc.edu/kam

*Decorative and Musical Art of the 17th—19th Centuries: A Quartet
of Ornamented String Instruments by Antonio Stradivari*, through
November 26, 2006

A Saint in the City: Sufi Arts of Urban Senegal, through
December 31, 2006

When We Were Young: New Perspectives on the Art of the Child,
through December 31, 2006

Branded and On Display, January 26 through April 1, 2007

Krasl Art Center—St. Joseph, Missouri

www.krasl.org

Heaven's Above: NASA Photography, November 24, 2006 –
January 7, 2007



Current and Upcoming Exhibitions (cont from page 5)

**Kresge Art Museum, Michigan State University—
East Lansing, Michigan**

www.msu.edu/~kamuseum

*MSU Department of Art & Art History Studio Art Biennial Faculty
Exhibition*, November 11 – December 15, 2006

*The Workers' Landscape, Part 1: American Images,
1900-1950*, January 6 – March 18, 2007

*MSU Department of Art & Art History Master of Fine Arts
Exhibition*, March 24 – April 6, 2007

MSU Department of Art & Art History Undergraduate Exhibition,
April 14 – April 29, 2007

Circus: The Art of the Strange & Curious,
May 5 – July 27, 2007

**Meadows Museum, Southern Methodist University—
Dallas, Texas**

www.smu.edu/meadows/museum

*Balenciaga and His Legacy: Haute Couture from the Texas Fashion
Collection*, February 4 – May 27, 2007

Coming of Age: American Art, 1850s to 1950s,
November 30, 2007 – February 24, 2008

**Miami University Art Museum, Miami University—Oxford,
Ohio**

www.muohio.edu/artmuseum

Graphic Content: Art of the New Music Poster, through November
18, 2006

Silk Road Oasis: The Sculpture of Ancient Gandhara,
through December 16, 2006

Social Justice: Robert Indiana, through December 16, 2006

**University of Michigan Museum of Art—
Ann Arbor, Michigan**

www.umich.edu/~umma

Mary Lucier: The Plains of Sweet Regret, through
November 19, 2006

The Rouge: Photographs by Michael Kenna, December 2, 2006
– January 14, 2007

Embracing Eatonville, January 20 – March 18, 2007

Imagining Eden: Connecting Landscapes,
March 31–June 3, 2007

Milwaukee Art Museum—Milwaukee, Wisconsin

www.mam.org

Biedermeier: The Invention of Simplicity, through
January 1, 2007

Francis Bacon Paintings from the 1950s, January 27 –
April 15, 2007

Adolph Gottlieb Prints: 1933-1946, May 24 –
August 19, 2007

Pissarro: Creating the Impressionist Landscape,
June 9 – September 9, 2007

Minneapolis Institute of Arts—Minneapolis, Minnesota

www.artsmia.org

*Vermillion Editions Limited: Prints, Multiples, Artist's Books, 1977-
1992*, through January 7, 2007

A Passion for Paintings: Old Masters from the Wadsworth Atheneum,
through January 7, 2007

An American Vision: Henry Francis du Pont's Winterthur Museum,
February 18 – May 6, 2007

Mirror of Nature: Nordic Landscape Painting, 1840-1910, June 24
– September 2, 2007

**Museum of Art and Archaeology, University of Missouri—
Columbia, Missouri**

www.maa.missouri.edu/

Elizabeth I: Ruler and Legend, through December 1, 2006

Museum of Contemporary Art—Chicago, Illinois

www.mcachicago.org

The Art of Richard Tuttle, November 11, 2006 –
February 4, 2007

Rudolf Stingel: Paintings 1987-2007, January 27, 2007 – May 20,
2007

Escultura Social: A New Generation of Art from Mexico City, June
23 – September 2, 2007

Sympathy for the Devil: Art and Rock and Roll Since 1967,
September 29, 2007 – January 27, 2008

Jim Nutt: Coming into Character, February 23 –
June 1, 2008

Nelson-Atkins Museum of Art—Kansas City, Missouri

www.nelson-atkins.org/

*Manet to Matisse: Impressionist Masters from the Marion and Henry
Bloch Collection*, June 9 – September 9, 2007

*Developing Greatness: The Origins of American Photography, 1839 to
1885*, June 9, 2007 – January 6, 2008

**Oakland University, Meadow Brook Art Gallery—Rochester,
Michigan**

www.oakland.edu/mbag

Still Life – Invisible Cities, through November 12, 2006

Chamber of Commerce, November 18 – December 17, 2006

Telegraph, January 13 – February 25, 2007

Tergloba, March 10 – April 15, 2007

Oakland University Senior Thesis Exhibition, April 20 –
May 20, 2007

Philbrook Museum of Art—Tulsa, Oklahoma

www.philbrook.org

Changing Hands 2: Art Without Reservation, January 28 –
April 22, 2007

Price Tower Arts Center—Bartlesville, Oklahoma

www.pricetower.org

Wright Restored: Frank Lloyd Wright's Price Tower Interiors, through
December 31, 2006

Raymond Loewy: Designs for a Consumer Culture,
January 12 – March 4, 2007

Tokyo: The Imperial Capital, March 16 – May 13, 2007

Out of Oklahoma: Contemporary Artists From Ruscha to Andoe,
May 25 – September 16, 2007

Saint Louis Art Museum—St. Louis, Missouri

www.slam.org

New Ireland: Art of the South Pacific, through
January 7, 2007



Current and Upcoming Exhibitions (cont from page 6)

Rembrandt: Master Etchings From St. Louis Collections, through January 14, 2007

Waking Dreams: The Art of the Pre-Raphaelites from the Delaware Art Museum, February 18 – April 29, 2007

Symbols of Power: Napoleon and the Art of the Empire Style, 1800-1815, June 17 – September 16, 2007

Contemporary Art Museum St. Louis—St. Louis, Missouri

www.contemporarystl.org

Larry Krone: Artist/Entertainer, through December 31, 2006

Janaina Tschape: Melanotropics, through December 31, 2006

I Remember Heaven: Jim Hodges and Andy Warhol,

January 26 – April 8, 2007

**Snite Museum of Art, University of Notre Dame—
Notre Dame, Indiana**

www.nd.edu/~sniteart

Caras Vemos, Corazones No Sabemos (faces we see, hearts we do not know): The Human Landscape of Mexican Migration to the United States, through November 12, 2006

Hyperflux: CalArts Silkscreen Poster Show, 1999-2004,

December 1, 2006-February 11, 2007

Requiem, January 14 – March 4, 2007

Annual BFA and MFA Candidates' Thesis Exhibition,

April 1 – May 20, 2007

Speed Art Museum—Louisville, Kentucky

www.speedmuseum.org

Building Books: The Art of David Macaulay, February 6 – May 13, 2007

The Best of Photography and Film from the George Eastman House Collection, June 19 – September 16, 2007

The Architecture of Gee's Bend Quilts, December 23, 2007 – March 16, 2008

Spencer Museum of Art—Lawrence, Kansas

www2.ku.edu/~sma/

Aaron Douglas: African American Modernist,

September 8 – December 2, 2007

Sheldon Swope Art Museum—Terre Haute, Indiana

www.swope.org

Taft Museum of Art—Cincinnati, Ohio

www.taftmuseum.org

Michael Scott: Farny Fables, through December 31, 2006

An Antique Christmas at the Taft Museum of Art,

November 17, 2006 – January 7, 2007

Luminist Horizons: The Art and Collection of James A. Suydam,
January 26 – April 29, 2007

Hiram Powers: Genius in Marble, May 18 – August 12, 2007

Toledo Museum of Art—Toledo, Ohio

www.toledomuseum.org

In Stabiano: Exploring the Ancient Seaside Villas of the Roman Elite,
November 11, 2006 – January 28, 2007

Walker Art Center—Minneapolis, Minnesota

www.walkerart.org

**Washington University, Mildred Lane Kemper Art Museum—
St. Louis, Missouri**

www.kemperartmuseum.wustl.edu/

Reality Bites: Making Avant-Garde Art in Post-Wall Germany,
Spring 2007

**Wayne State University, The Elaine L. Jacob Gallery—
Detroit, Michigan**

www.art.wayne.edu

UNEMBEDDED: The War in Iraq, Year 4 – Day 1,

November 17, 2006 – January 12, 2007

Shrinking Cities? Wayne State University Responds,

January 26 – March 16, 2007

Where We Come From by Emily Jacir,

March 30 – May 25, 2007

Juried Watercolor Exhibition, June 8 – July 20, 2007

Frederick R. Weisman Art Museum—Minneapolis, Minnesota

www.weisman.umn.edu

Bob Dylan's American Journey, 1956-1966,

February 3 – April 29, 2007

West Bend Art Museum—West Bend, Wisconsin

www.wbartmuseum.com

Otto Bielefeld Rediscovered, through November 12, 2006

WBAM Friends' Exhibition, November 15, 2006 – January 7, 2007

Wexner Center for the Arts—Columbus, Ohio

www.wexarts.org

Shiny, through December 31, 2006

Wichita Art Museum—Wichita, Kansas

www.wichitaartmuseum.org

Garbo's Garbos, through January 21, 2007

William Bailey on Paper, February 4 — May 13, 2007

Marsden Hartley: American Modern,

February 11 — April 29, 2007

Eudora Welty: The Passionate Observer,

June 10 – September 30, 2007

**Leigh Yawkey Woodson Art Museum—
Wausau, Wisconsin**

www.lywam.org

From Sea to Shining Sea: A Reflection of America,

November 18, 2006 – January 21, 2007

Living with Art: Early American Modernism,

January 27 – April 1, 2007

An American Story: The Wyeth Family Tradition,

June 16 – August 26, 2007

The College of Wooster Art Museum

www.artmuseum.wooster.edu/

Editorial Notes

The **Cuttler Fund** was established by *Professor Charles D. Cuttler* of the *University of Iowa* to provide travel support to students presenting papers at the annual MAHS meeting (this year in Milwaukee). The fund is supported by contributions from MAHS members and friends. Please contact Randy Coleman, MAHS Treasurer, at coleman.1@nd.edu if you would like to donate to the Cuttler Fund or receive information for requesting support.

Museums and galleries are invited to send press releases and images (images on disc preferred) to the editor whenever exhibition press packets are ready. Although preference is given to exhibi-

tions open when the newsletter is mailed and received (October 1 for the fall issue; May 1 for the spring listings, all images will be considered for publication so as to acknowledge the ongoing contributions and accomplishments of our member institutions. Images of new acquisitions are also welcome. The sooner these materials arrive, the more possibilities there are for publication. *Please include the relevant exhibition or acquisition information on each image. (Consult this newsletter for caption formats.) Send to: MAHS Newsletter, Paula Wisotzki, 1253 W. Flournoy Street, Chicago, IL 60607*

Graduate Student Fellowships, Grants, and News

James Murley, Ph.D. student in art history at the *University of Louisville*, received a Fulbright Fellowship to participate in the 2005 Summer Session at the American School of Classical Studies at Athens. In summer 2006 he participated in the NEH Institute, Models of Ancient Rome, at UCLA.

Kelly Watt, Ph.D. student in art history at the *University of Louisville*, presented a paper at the 2006 MAHS conference in Dallas. Her paper, "San Baudelio in the Light of the *Reconquista*," was nominated for the MAHS Graduate Student Award.

Significant Publications by Members

Dario A. Covi, emeritus professor of Renaissance Art at the *University of Louisville*, published *Andrea del Verrocchio: Life and Work* (Casa Editrice, 2005).

Marilyn Dunn, associate professor in the Fine Arts Department of Loyola University Chicago, published a review of John W. O'Malley, S.J. and Gauvin Alexander Bailey, Eds. *The Jesuits and the Arts, 1540-1773* (Saint Joseph's University Press, 2005) in *Aurora, The Journal of the History of Art* 7 (2006).

Benjamin Hafbauer, associate professor of American Art and Architectural History at the *University of Louisville*, published *Presidential Temples: How Memorials and Libraries Shape Public Memory* (University of Kansas Press, 2006)

Andrew E. Hershberger, *Bowling Green State University*, has published the following peer-reviewed articles: "Bordering on Cultural Vision(s): Jay Dusard's Collaboration with the Border Art Workshop/Taller de Arte Fronterizo," *Art Journal* 65, 1 (Spring 2006), 82-93; "Krauss's Foucault and the Foundations of Postmodern Photo History," *History of Photography* 30, 1 (Spring 2006), 55-67; "Performing Excess/Signaling

Anxiety: Toward a Psychoanalytic Theory of Daguerre's Diorama," *Early Popular Visual Culture* 4, 2 (July 2006), 85-101; and "The Past, Present and Future of the History of Photography: Interviews with Peter C. Bunnell, Gretchen Garner, and Britt Salvesen," *History of Photography* 30, 3 (Autumn 2006), 203-211.

Theresa Leininger-Miller, *University of Cincinnati*, has published "New Negro Maler und Bildhauer in Paris 1922-1934," in Tobias Wendl and Bettina von Linti, Eds. *Black Paris: Kunst und Geschichte einer schwarzen Diaspora* (Peter Hammer Verlag, 2006); "Augusta Savage" and "Nancy Elizabeth Prophet," in Whitney Chadwick and Aaris Sherin, Eds. *Grove Art Online/The Dictionary of Art* (Oxford University Press, online as of October, 2006); and "Visual Arts, the Great Migration in" and "Augusta Savage," in Steven Reich, Ed., *Encyclopedia of the Great Migration*, Vol 2. (Greenwood Press, 2006).

William R. Levin, *Centre College*, has published "'Tanto goffe e mal fatte...dette figure si facessino...belle': The Trecento Overdoor Sculptures for the Baptistry in Florence and their Cinquecento

Replacements," in *Studies in Iconography*, 26 (2005), pp. 205-242.

Judith W. Mann, *St. Louis Art Museum*, has edited *Artemisia Gentileschi: Taking Stock, Papers Presented at Gentileschi Symposium, Saint Louis Art Museum* (Brepols Publishers, 2005). The volume includes two essays by Mann, "Introduction: Taking Stock of Artemisia and Her Symposium," and "The Myth of Artemisia as Chameleon: A New Look at the London *Allegory of Painting*."

Shelley Perlove, *University of Michigan*, has published "Identity and Exile in Seventeenth-Century Amsterdam: A Portrait of Menasseh ben Israel by Salom Italia," in *The Low Countries: Crossroads of Cultures*, edited by T.J. Broos, M. Bruyn Lacy and T.F. Shannon (Germany, 2006).

Jean Robertson, Herron School of Art and Design, *Indiana University-Purdue University Indianapolis* has published the "Foreword" and an "Interview with the Artist" conducted for the Archives of American Art, Smithsonian Institution, in the monograph *Nancy Crow* (Breckling Press, 2006).



Midwest Art History Society Annual Conference, March 28-31, 2007

Call For Papers

PROPOSALS ARE DUE ON FRIDAY, DECEMBER 15, 2006. They should be typed single-spaced, no longer than 250 words. Please list only your name and institutional affiliation (no titles). Remember to include a c.v. and indicate your MAHS membership status. You should not submit more than one abstract to this conference. Session chairs will notify applicants about their decisions by January 8, 2007.

Graduate Student Submissions: The Midwest Art History Society encourages submissions from graduate students. The Charles D. Cuttler Graduate Student Travel Stipend provides travel support to students presenting papers. After acceptance of the paper, please contact Randy Coleman, MAHS Treasurer, at coleman.1@nd.edu if you would like to receive information for requesting support.

Italian Renaissance and Baroque Art

This session invites submissions from scholars working on any topic in the history of Italian art between the fourteenth and seventeenth centuries. Especially welcome are papers that address the ways in which the art object structures the viewer's experience and prompts interpretation. Interdisciplinary topics are also encouraged, for instance, topics that address word/image relationships, or the negotiation of personal and political authority in artwork. Shelley MacLaren, Grand Valley State University, Candler Art Center, Allendale, MI 49401-9403, Tel: (616) 331-2568; maclares@gvsu.edu OR smaclar@learnlink.emory.edu

African Art

African Art/Visual Culture: The State of the Field

The field of African art studies has undergone considerable change over the past two decades. The focus is more inclusive and no longer narrowly defined as sculptural and traditional and is based on a variety of approaches, drawn from different disciplines. The panel invites papers that represent recent scholarship, revised interpretation of existing data, new scholars, and any scholar employing innovative paradigms or methodologies. This panel is meant to highlight the current nature of the field and to reflect those changes that have made the study of African visual culture a dynamic and innovative area of research within the discipline of Art History. Fred T. Smith, School of Art, Kent State University, Kent, OH 44242, Tel: (330) 672-1359; fsmith@kent.edu.

Medieval Art

Art and Power in the Middle Ages

Participants are invited to submit abstracts that address how those who wielded religious or secular power in the Middle Ages employed art or architecture to articulate and further their strategies and goals. Papers might also investigate how the seemingly disenfranchised may have used art to question or undercut the influence of the establishment. Papers may deal with any period or area, East or West, 300-1500 C.E. Diane J. Reilly, Hope School of Fine Art, Indiana University, Bloomington, 1201 East 7th Street, #132, Bloomington, IN 47405-5501 or Tel: (812) 855-9556; dreilly@indiana.edu, Fax: (812) 855-7498

Pop Art: Mass Culture, Celebrity, and Resistance

With its emergence in the late 1950s and the early 1960s, Pop art challenged the values of both advertising and high art and questioned prevailing ideas about quality and value. While earlier postwar artists saw themselves in opposition to popular culture, Pop art began to reach out to a wider audience, to appropriate images and materials from mass culture, and to present the artist as a media celebrity. But if some of the art of the 1960s seems in sync with a commodity culture, Pop practices also yield strategies for developing an art of resistance and criticism. These contradictory trajectories reveal themselves in the earliest work labeled Pop and continue in current Pop-inspired practices. This session encourages scholars to submit papers that represent recent scholarship about Pop practice from the 1960s to the present. Papers should offer revised interpretation of works of art, innovative paradigms or methodologies, or analysis of criticism. Digital proposals accepted. Jeffrey Thompson

School of Art, 1425 Sangren Hall, Western Michigan University
Kalamazoo, MI 49008 Tel: (269) 387-2439; jeffrey.thompson@wmich.edu, Fax: (269) 387-2477

Acquisitions and Installations: Recent Developments in Midwestern Museums

This panel will feature acquisitions made since January 2005 as well as installations of new or reconfigured gallery spaces. More than just a show and tell, the session welcomes submissions that demonstrate new strategies, approaches, or methods in collection growth and display. Even tales of the acquisition that got away can be helpful in reflecting the challenges facing museums and art historians today. Ellen W. Lee The Wood-Pulliam Senior Curator, Indianapolis Museum of Art 4000 Michigan Road Indianapolis, IN 46208, Tel: (317) 920-2662, ext. 141; elee@ima.museum

Northern Renaissance and Baroque Art

Papers included in this session will address Northern Renaissance and Baroque art and architecture in new ways. Particularly welcome are papers that examine painting, sculpture, and any other form of material culture in terms of its cultural context. Additionally, studies that involve new methods for approaching familiar problems are invited. Laura Gelfand, Myers School of Art, The University of Akron, Akron, OH 44325-7801, lgelfan@uakron.edu, Fax: (330) 972-5960.

Asian Art

This panel will entertain papers encompassing a broad range of topics in art from South Asia as well as East Asian countries. Those responding to modern and contemporary issues as well as individual artists and movements are especially welcomed. Marcella C. Sirhandi, Department of Art History, 1920 W. University Ave., Stillwater, OK 74074, Tel: [cell] (816) 204-8727; marcela@okstate.edu

Islamic Art

New Approaches to Islamic Painting

The study of Islamic painting has undergone significant developments over the past two decades. No longer narrowly focused or impeded by a formalist approach, scholars have sought to explain the power of the image in Islamic traditions through text-and-image studies as well as through a number of other paradigms. This panel seeks to present new theoretical approaches and methodologies towards the study of Islamic painting. Papers addressing a variety of related issues are intended to highlight and discuss the current state of the field. Christiane Gruber, Department of Art History, Indiana University at Bloomington, 1201 E. Seventh Ave., Office 132, Bloomington, IN 47405, Tel: (812) 855-6714; chgruber@indiana.edu

Eighteenth- and Nineteenth-Century Art

This session invites papers from scholars working on any topic in the history of eighteenth or nineteenth century art. Possible topics might include, but are not limited to: changing social expectations for artists, the uses and limits of genre, and interactions between geographical regions. Interdisciplinary approaches are welcomed. Please send abstracts via e-mail attachment to: Jennifer Lee, Herron School of Art and Design, IUPUI, Eskenazi Hall / HR 172 735 W. New York St., Indianapolis, IN 46202 Tel: (317) 278-9451; jenlee@iupui.edu

Modern Art

This session invites submissions from scholars working on any topic within the field of modern art. We are interested in innovative studies of modernism set within an interdisciplinary context. Papers may be addressed to the fine, decorative, folk, or popular arts. Topics concerning gender, nationalism, sexuality, and ethnicity are especially encouraged. Christine Bentley, University of Indianapolis, Department of Art & Design, 1400 E. Hanna Ave., Indianapolis, IN 46217, Tel: (317) 250-6130; cbentley@uindy.edu



Hans Mielich
Portrait of a Lady, 1540/41
 Oil on Panel
 Gift of Maria and Larry Roberts in
 memory of Anny and Albin Salton
 Saint Louis Art Museum – Saint
 Louis, Missouri



Hans Mielich
Portrait of a Gentleman, 1540/1
 Oil on panel
 Gift of Maria and Larry Roberts in
 memory of Anny and Albin Salton
 Saint Louis Art Museum – Saint
 Louis, Missouri



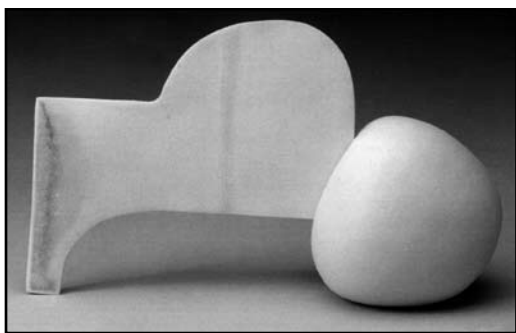
Eldzier Cortor
Stopping Place, ca. 1950
 Woodcut on paper
 Courtesy of Kenkeleba Gallery
 © Eldzier Cortor
 In *“Black Spirit”: Works on Paper by
 Eldzier Cortor*
 Spring, 2006
 Indiana University Art Museum
 – Bloomington, Indiana



Aaron Douglas
*The Negro Speaks of Rivers (for Langston
 Hughes)*, 1941
 Pen and ink on paper
 Walter O. Evans Collection
 In *African American Art from the Walter
 O. Evans Collection*,
 Spring/Summer, 2006
 The Detroit Institute of Arts

Eldzier Cortor
Dance Composition No. 31, 1978, Color
 intaglio on paper
 Courtesy of Kenkeleba Gallery, © Eldzier
 Cortor
 In *“Black Spirit”: Works on Paper by Eldzier
 Cortor*
 Spring, 2006
 Indiana University Art Museum –
 Bloomington, Indiana





Ruth Duckworth, *Untitled [sphere and blade #703201]*, 2001, Porcelain

In *Ruth Duckworth, Modernist Sculptor*,
Winter/Spring, 2006

Minneapolis Institute of Arts – Minneapolis,
Minnesota

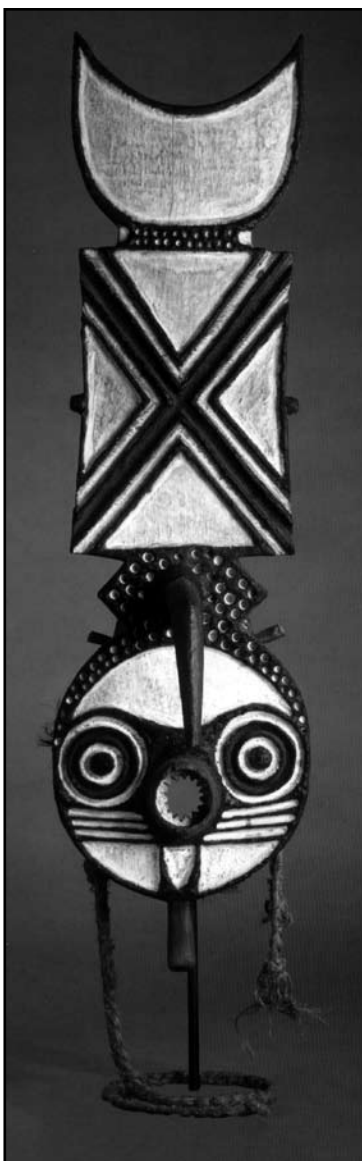


Attributed to Donatello

The Borromeo Madonna, c. 1450

Terracotta

Kimbell Art Museum – Fort Worth,
Texas



Mask, Bwa, Burkina Faso

Wood and fiber

The Stanley Collection

University of Iowa Museum of Art
– Iowa City, Iowa



Jacob Lawrence, *Genesis Creation Sermon V*,
1989, Gouache on paper.

The Walter O. Evans Foundation for Arts and
Literature

In *African American Art from the Walter O. Evans
Collection*, Spring/Summer, 2006

The Detroit Institute of Arts – Detroit,
Michigan

Albrecht Durer
Saint Jerome in His Study, 1514

Engraving

Bequest of Herschel V. Jones
Minneapolis Institute of Arts
– Minneapolis, Minnesota



April Gornik,
Winding Trees, 2005

Charcoal on paper
Allen Memorial Art
Museum, Oberlin
College – Oberlin,
Ohio



Midwest Art History Society Annual Conference, March 28-31, 2007

Call For Papers (continued from page 9)

Contemporary Native American Art: Rethinking the Field

Questions of identity remain trenchant in all fields of art history; for those studying contemporary Native American art, issues of identity are particularly fraught. This panel invites papers that represent new, innovative scholarship, and/or alternative methodological and theoretical frameworks for thinking about topics pertaining to recent Native American art. Papers may address the work of an individual artist or group of artists, or they may seek a broader, more theoretical perspective. Jo Ortel, Department of Art and Art History, Beloit College, 700 College Street, Beloit, WI 53511, Tel: (608) 363-2634; ortelj@beloit.edu

African American Art and the Global Perspective

To study African American art is to engage with modernist cultures of globalization, from the African diaspora to the world-wide ubiquity of black culture. The history of art is also a part of modernist culture but has traditionally favored a discourse of national schools and localization. This panel proposes to ask how African American art can be understood to demonstrate both rootedness and itinerancy, participating in modernism while contesting it simultaneously. Can African American art be global, nomadic and hybrid as well as local? If this applies to the borderlands, is it also true in the heartland? Is this a matter of cosmopolitanism? Proposals are sought that take a transnational, international, polycultural or comparative approach to the study of African American art of all periods, with an emphasis on new methods and fresh approaches. Papers might address the African diaspora, the Black Atlantic, trans-Atlantic exchange, inter-American or hemispheric perspectives, the Caribbean or political solidarity with Asia. John P. Bowles, Department of the History of Art, Indiana University, Fine Arts 132, 1201 East Seventh Street, Bloomington, IN 47405-5501, Tel: (812) 856-7821; jpbowles@indiana.edu

Art in Science and Medicine

Images have long played a crucial role in the education, practice and research of medicine and science. The visual aspects of medicine and science continue to develop through new technologies and artistic interpretations of medical and scientific concepts. This session invites papers on any topic related to the role of art in medicine and science. Thomas Weinzerl, Office of Visual Media, Indiana University School of Medicine, 102 Emerson Hall 545 Barnhill Dr., Indianapolis, IN 46202, tweinzer@iupui.edu

Architectural History

Spreading Out: Suburban House Building, Development and Architecture in 20th Century Midwestern Cities

This session invites papers on community planning in suburban America, including papers on housing types, pre World War Two suburban development in Midwestern cities, housing styles or types in Midwestern cities from 1890-1941, or other similar subjects. Paul C. Diebold, Senior Architectural Historian, DNR - Division of Historic Preservation and Archaeology, 402 W. Washington St., Rm. W274, Indianapolis, IN 46204, 317-232-1646 www.in.gov/dnr/historic, PDiebold@dnr.state.in.us

Latin American Art

This session welcomes papers that deal with any aspect of architecture, painting, sculpture, photography, film or other media produced in Latin America or by expatriate Latin American artists from the Pre-Columbian period to the present. Scholars are especially encouraged to present on such topics as identity, otherness, and cross-culturalization. Electronic and hard copy submissions welcome. Ilenia Colón Mendoza, Herron School of Art and Design / IUPUI, 735 W. New York St., Indianapolis, IN 46202, Tel: (317)-278-9451; ilecolon@iupui.edu

Technology and Art History

New technology is changing the way art historians prepare their classes each day. Does it also change the content of those classes? Does it change what or how students learn? How does technology change art historical research? Or art itself? Does art history ever cause technological change? Papers touching on any aspect of the relationship between art history and technology are encouraged, including but not limited to questions of pedagogy, resource allocation, theoretical concerns, or technology within art.

Please send abstracts via e-mail attachment to: Sonja Staum, Herron Art Library, Herron School of Art and Design / IUPUI, 735 W. New York St., Indianapolis, IN 46202, ssaumku@iupui.edu

Contemporary Art

This session welcomes papers devoted to the study of visual art created since World War Two, using both traditional and experimental mediums. Papers that explore work in related fields—architecture, design, film—are also welcome if the work engages the concerns of visual art. Papers may address visual art in any part of the world, and may respond to individual artists and/or current themes and issues. Katherine Nagler, Director, Indianapolis Museum of Contemporary Art (iMOCA), 340 N. Senate Ave., Indianapolis, IN 46204, Tel: (317) 634-6622; naglernagler@comcast.net

Open Session

Please send submissions to the Chair. Jennifer Lee, Herron School of Art and Design, IUPUI, Eskenazi Hall / HR 172, 735 W. New York St., Indianapolis, IN 46202, Tel: (317) 278-9451; jenlee@iupui.edu

ROUNDTABLES

In addition to sessions with papers, the MAHS conference in Indianapolis will include two roundtables (described below). Each roundtable will bring together experts who will engage in a discussion of the central ideas and issues that frame current debates and practices pertaining to the topic of the roundtable. Send a c.v. and statement of your expertise and interest in the roundtable to the chair or co-chairs listed below. Roundtable chairs will select participants and will facilitate the discussion.

ROUNDTABLE: Regarding Art History in Global Perspectives

This roundtable will be devoted to new topics in non-Western art history. Participants will discuss such topics as: pressures to abandon the center-periphery model of art history, which applies Western categories of art and Western art historical methods to the visual culture of non-Western regions of the world; the pursuit of interdisciplinary topics associated with the new field of visual culture studies and with theoretical positions such as postcolonialism; challenges to Orientalist and colonialist art histories and assumptions; a reconsideration of the history and practices of art-making that preceded colonialism, such as new research demonstrating that various precolonial societies placed importance on individual artistic identity and personal style; the rethinking of how modernism played out in regions outside Europe and North America; and the rethinking of the problematic of precolonial/ colonial/ postcolonial periodization itself. Send your c.v. and statement of interest and expertise in the topic to both co-chairs listed below: Jo Ortel, Department of Art and Art History, Beloit College, 700 College Street., Beloit, WI 53511, Tel: (608) 363-2634; ortelj@beloit.edu

Mario Caro, Public Scholar for Civic Engagement, Museum Studies and Art History, Herron School of Art and Design, IUPUI, Eskenazi Hall / HR 240, 735 W. New York St., Indianapolis, IN 46202, Tel: (317) 278-9483; mariocar@visualcultures.net

ROUNDTABLE: Researching Provenance: Case Histories and Lessons Learned

During the past decade, the provenance of art objects has become a subject of increased interest and importance among American museums. The location of pieces during World War II has become a "front-burner" topic, and recent developments at the Getty Museum and elsewhere have catapulted the ownership histories of ancient objects into the limelight as well. This roundtable is designed for those people who have been doing provenance research to share their case histories, highlighting the techniques, resources, and strategies that have proven most helpful in undertaking this important research. We also welcome research projects where the provenance remains incomplete but offers interesting issues or difficult challenges that could be offered for discussion to the group. Send your c.v. and statement of interest and expertise in the topic to the roundtable chair: Judith W. Mann, Curator, Early European Art, Saint Louis Art Museum, One Fine Arts Drive, Forest Park, St. Louis, MO 63110, Tel: (314) 655-5218; judy.mann@slam.org, Fax: (314) 721-6172

Midwest People/People in the Midwest Colleges and Universities

Linda Maria Giganti, associate professor of Ancient Art at the *University of Louisville*, was a member of the 2006 NEH summer seminar, "Trajan's Column: Narratives of War, Civilization, and Commemoration in the Roman Empire" at the American Academy in Rome.

Amy Golahny, *Lycoming College*, will be Ailsa Mellon Bruce Visiting Senior Fellow, Spring 2007, at CASVA, working on the topic of Rembrandt and Italy.

Susan Jarosi has joined the art history faculty in Contemporary Art and Theory at the *University of Louisville*. She was awarded the Ph.D. from Duke University in 2005, with a dissertation on "Art & Trauma Since 1950: A Holographic Model."

Theresa Leininger-Miller, *University of Cincinnati*, curated "The People's Fountain: Images of the Tyler Davidson Fountain (1871) at Its 135th Anniversary" which appeared at the Public Library of Cincinnati and Hamilton County (July 5-September 20, 2006) and the College of DAAP Library, University of Cincinnati (November 1-December 26, 2006).

The 2007 Visiting Morgan Professor in Architectural History and Design at the *University of Louisville* is **Robert**

McCarter, practicing architect and architectural historian at Washington University in St. Louis. He will teach a graduate seminar on Frank Lloyd Wright.

Ilenia Colon Mendoza has been appointed assistant professor of art history at Herron School of Art and Design, *Indiana University-Purdue University Indianapolis*. She is completing a Ph.D. at Pennsylvania State University, with a concentration in Spanish Baroque art. Also joining the Herron program is Stephanie S. Doty, who has been appointed a lecturer in art history and coordinator of art appreciation. She received the M.F.A. in studio art from Indiana State University.

Jonathan B. Riess, Professor of Art History at the College of Design, Architecture, Art, and Planning (DAAP), *University of Cincinnati*, died unexpectedly on May 17, 2006. He served the School of Art as Director from 2000 to 2002, and many years as Director of Graduate Studies and Chair of Art History. A specialist in Italian Renaissance art, Riess was also very knowledgeable about the English Arts and Crafts movement. Donations to a scholarship in Riess's honor may be made to the "UC Foundation" and sent to Laura Johnson Dorl, Director

of Development, College of Design, Architecture, Art, and Planning, University of Cincinnati, PO Box 210016, Cincinnati, Ohio 45221-0016.

The Department of Art History and Archaeology, *University of Missouri-Columbia*, announces the appointment of **Michael Yonan** as assistant professor of early modern art history. Yonan's research focuses on the art and architecture of 18th-century Vienna. He is currently on leave as a Getty fellow preparing a book-length study of the Habsburg empress Maria Theresa and the politics of imperial art. **Mary Salzman** joins the department this fall as a visiting assistant professor. She is a specialist in the visual arts and intellectual history of rococo France, and is particularly interested in genre painting and the decorative arts. **Brett Van Hoesen** is a visiting instructor of modern and contemporary art. Her research centers on German visual culture during the Weimar Republic. Also joining the department is **Alex Barker**, the new director of the museum of Art and Archaeology. Barker is a field archaeologist with particular experience in Old and New World prehistory and museum studies.

Midwest People/People in the Midwest Galleries and Museums

The *Cincinnati Art Museum* announced the appointment of **Aaron Betsky** as director. The Art Museum selected Betsky, currently director of the Netherlands Architecture Institute, from a field of several dozen national and international candidates. Betsky is expected to begin work at the Art Museum in mid-November.

Marilyn Carbonell has been appointed head of the *Nelson-Atkins Museum of Art's* Library Services. She was previously assistant director for collection development at the *University of Missouri Kansas City* University Libraries.

Mary Weaver Chapin was appointed Assistant Curator of Prints and Drawings at the *Milwaukee Art Museum*. She was previously the assistant curator of earlier European art at the Museum.

Andria Derstine has joined the *Allen Memorial Art Museum*, Oberlin College, as Curator of Western Art. She previously worked as Assistant Curator of European Art at the *Detroit Institute of Arts*.

The *Taft Museum of Art* has engaged **Joan Hendricks** as registrar and collections manager. In addition, **Alan Jones** as been appointed to serve as the museum's chief of security, and **Tricia Suit** has joined the museum staff as public relations manager.

Melanie Hoff has joined the *University of Michigan Museum of Art* as Development Specialist, and **Jessica Hale** is the Museum's new Development Assistant.

The *Contemporary Arts Center* in Cincinnati, Ohio has announced the appointment of **Toby Kamps** as Senior Curator. Kamps was most recently Curator and Department Head at the Museum of Contemporary Art San Diego.

Andrea Keppers is the *Wichita Art Museum's* new director of education. Previously she taught art history at Colorado State University and Metropolitan State College of Denver.

Jason Trimmer has joined the *Allen Memorial Art Museum*, Oberlin College, as Curator of Education. He was previously Curator of Exhibition/Arts in Education Coordinator at the Regina Quick Center for the Arts at St. Bonaventure University, New York.

Independents

[no information]



MAHS Member Museums and Galleries Contacts, websites and e-mail addresses*

*Please contact the editor (pwisots@luc.edu) to report changes in this listing.

Akron Art Museum—Akron, Ohio

www.akronartmuseum.org

Elizabeth Quirk Sheeler, Communications Officer

equirkl@akronartmuseum.org

330-376-9186 x 213 t

330-376-1180 f

University of Akron, Mary Schiller Myers School of Art—Akron, Ohio

www.uakron.edu/art

Shelly Gracon, Art Events Coordinator

sgracon@uakron.edu

330-972-5951 t

330-972-5960 f

Allen Memorial Art Museum, Oberlin College—Oberlin, Ohio

www.oberlin.edu/~allenart

Leslie Miller

Leslie.miller@oberlin.edu

440-775-8670 t

440-775-8799 f

Art Institute of Chicago—Chicago, Illinois

www.artic.edu/aic

aic.publicaffairs@artic.edu

Eileen Harakal or John Foley Hindman, Dept. of Public Affairs

312-443-3626 t

312-443-0193 f

Brunnier Art Museum—Ames, Iowa

www.iastate.edu

Dana Michels, Curator of Exhibitions and Collections

dmichels@iastate.edu

515-294-7087 t

515-294-7070 f

Buffalo Bill Historical Center—Cody, Wyoming

www.bbhc.org

Jan Jones, Communications Department

janj@bbhc.org

307-587-4771 t

307-587-5714 f

Centre College, Aegon Gallery—Danville, Kentucky

www.centre.edu

Judith PointerJia, Gallery Coordinator

jia@centre.edu

859-238-5469 t

859-238-6977 f

Chazen Museum of Art—Madison, Wisconsin

www.chazen.wisc.edu

Patricia Powell

ppowell@chazen.wisc.edu

608-263-2068 t

608-263-8188 f

Cincinnati Art Museum—Cincinnati, Ohio

www.cincinnatiartmuseum.org

Natalie Hastings, Assistant Director of Communications

natalie.hastings@cincyart.org

513-639-2954 t

513-639-2888 f

Contemporary Arts Center—Cincinnati, Ohio

www.contemporaryartscenter.org

Sarah Hawkins, Public Relations Manager

pr@CACmail.org

513-345-8415 t

Museum of Contemporary Art Cleveland—Cleveland, Ohio

www.MOCAcleveland.org

Kelly Bird, Director of External Affairs

kbird@MOCAcleveland.org

216-421-8671 t

216-421-0737 f

Cleveland Institute of Art, The Reinberger Galleries—Cleveland, Ohio

www.cia.edu/gallery_reinberger

Linda Zeck

lzeck@gate.cia.edu

216-421-7403 t

216-421-7438 f

Cleveland Museum of Art—Cleveland, Ohio

www.clemusart.com

Julie Limpach, Marketing and Communication Assistant

jlimpach@clevelandart.org

216-707-2265 t

216-229-5095 f

Cleveland State University, The Cleveland State University Art Gallery—Cleveland, Ohio

www.csuohio.edu

Mary Grodeck

m.grodek@csuohio.edu

216-687-2290 t

216-687-9229 f

Cranbrook Academy of Art Art Museum—Bloomfield Hills, Michigan

www.cranbrookart.edu/museum

Gregory Wittkopp, Director

gwittkopp@cranbrook.edu

248-645-3323 t

248-645-3324 f

Dallas Museum of Art—Dallas, Texas

www.dm-art.org

Ellen Key, Communications Department
214-922-1344 t

Jeanne Chvosta, Communications Department

214-922-1376 t

214-954-0174 f

Detroit Institute of Arts—Detroit, Michigan

www.dia.org

Pam Marcil

313-833-7899 t

pmarcil@dia.org

313-833-1732 t

313-833-7881 f

Figge Art Museum—Davenport, Iowa

www.figgeartmuseum.org

Angela Carlson

ASC@ci.davenport.ia.us

563-326-7890 t

319-326-7876 f

Flint Institute of Arts—Flint, Michigan

www.flintarts.org

info@flintarts.org

Rachelle Richert, Public Relations

810-237-7304 t

810-234-1692 f

Fort Wayne Museum of Art—Fort Wayne, Indiana

www.fwmoa.org

Linda Dykhuizen, Public Information

Coordinator

linda@fwmoa.org

219-422-6467 t

219-422-1374 f

Fred Jones Jr. Museum of Art—Norman, Oklahoma

www.ou.edu/fjjma

Stephanie Royse

Stephanier@ou.edu

405-329-8233 t

405-325-7696 f

Frederik Meijer Gardens—Grand Rapids, Michigan

www.meijergardens.org

Sally Littlefair, Public Relations Coordinator

slittlefair@meijergardens.org

616-975-3143 t

616-957-5792 f

Freeport Arts Center—Freeport, Illinois

Becky Connors, Director

arts@mwci.net

815-235-9755 t

815-235-6015 f

Gilcrease Museum—Tulsa, Oklahoma

www.gilcrease.org

The Wallas Group



MAHS Member Museums and Galleries Current PR Contacts, websites and e-mail addresses*

Susan Witt
ludeman@swbell.net
918-742-5699 t
918-747-2025 f

Patrick & Beatrice Haggerty Museum of Art, Marquette University—Milwaukee, Wisconsin

www.marquette.edu/haggerty
www.marquette.edu/haggerty

Tina Sosnowski
haggerty@mu.edu
414-288-3657 t
414-288-5415 f

Indiana University Art Museum—Bloomington, Indiana

www.indiana.edu/~iuam
emjpowel@indiana.edu

Emily Powell, Manager of External Relations
812-855-5445 t
812-855-1023 f

Indianapolis Museum of Art—Indianapolis, Indiana

www.ima.art.org

Joyce Lorenz, PR and Marketing Manager
317-923-1331 x238 t
317-926-8931 f

University of Iowa Museum of Art—Iowa City, Iowa

www.uiowa.edu/~artmus

Brad Chenoweth, Director of Development
Betty Breazeale
Betty-breazeale@uiowa.edu

319-355-1727 t
319-335-3677 f

Joslyn Art Museum—Omaha, Nebraska

www.joslyn.org

Amy Rummel, Media Relations Coordinator
Info@joslyn.org
402-342-3300 t
402-342-2376 f

Kelsey Museum of Archaeology, The University of Michigan—Ann Arbor, Michigan

www.umich.edu/~kelseydb

Todd Gerring
tegerr@umich.edu
734-764-9304 t
734-763-8976 f

Kent State University, The Kent State University School of Art Gallery—Kent, Ohio

www.kent.edu

Dr. Fred T. Smith, Director
fsmith@kent.edu/art
330-672-7853 t
330-672-4729 f

Kent State University, Gallery 138—Kent, Ohio

www.kent.edu/art/138

H. Anderson Turner III, Gallery Director
Gallery 138@kent.edu or haturner@kent.edu
330-672-9772 t
330-672-9773 f

University of Kentucky Art Museum—Lexington, Kentucky

www.uky.edu/ArtMuseum

Carolyn Payton, Public Relations Coordinator
cpayt2@email.uky.edu
859-257-5716 t
859-323-1994 f

Kimbell Art Museum—Fort Worth, Texas

www.kimbellart.org

Mindy Riesenber
mriesenberg@kimbellmuseum.org
817-332-8451 x 241
817-877-1264 f

Krannert Art Museum, University of Illinois at Urbana-Champaign

www.art.uiuc.edu/kam

Diane Schumacher
schumach@uiuc.edu
217-333-9866 t

Krasl Art Center—St. Joseph, Missouri

www.krasl.org

info@krasl.org
Cara Kuball
616-983-0271 t
616-983-0275 f

Kresge Art Museum, Michigan State University—East Lansing, Michigan

www.msu.edu/~kamuseum

Susan Bandes, Director
bandes@msu.edu
517-353-9836 t
517-353-6577 f
Julie Thomson, Outreach Coordinator
thomso16@msu.edu
517-353-9834 t
517-355-6577 f

University of Louisville, Allen R. Hite Art Institute—Louisville, Kentucky

www.art.louisville.edu

John Begley
john.begley@louisville.edu
502-852-6794 t
502-852-6791 f

Loyola University Museum of Art—Chicago, Illinois

http://luc.edu/luma/

Maeve Kiley, Director of Communications
mkiley2@luc.edu
312-915-7712 t

Meadows Museum, Southern Methodist University—Dallas, Texas

www.smu.edu/meadows/museum

Craig Boleman, Manager, Marketing & Public Relations
cboleman@mail.smu.edu
214-768-3785 t

Miami University Art Museum, Miami University—Oxford, Ohio

www.muohio.edu/artmuseum

Kelly Albin, Coordinator of Audience Development
albinke@muohio.edu
513-529-5007 t
513-529-6555 f

University of Michigan Museum of Art—Ann Arbor, Michigan

www.umma.umich.edu

Stephanie Rieke, Public Relations
srieke@umich.edu
734-763-UMMA t
734-764-3731 f

Milwaukee Art Museum—Milwaukee, Wisconsin

www.mam.org

Pam Kassner, Senior Director, Marketing and Communications
kassner@mam.org
414-224-3240 t
Vicky Reddin, Communications Manager
Vicky.reddin@mam.org
414-224-3243 t

Minneapolis Institute of Arts—Minneapolis, Minnesota

www.artsmia.org

Anne-Marie Wagener, Public Relations Coordinator
awagener@artsmia.org
612-870-3280 t
612-870-3169 f

Museum of Art and Archaeology, University of Missouri—Columbia, Missouri

www.research.missouri.edu/museum

Bruce T. Cox, Coordinator, Membership, Marketing & Development
coxb@missouri.edu
573-882-6724 t
573-884-4039 f

Museum of Contemporary Art—Chicago, Illinois

www.MCACHicago.org

Carla Loring
cloring@mcachicago.org
312-397-3834 t
312-397-3934 f



MAHS Member Museums and Galleries Current PR Contacts, websites and e-mail addresses*

University of Nebraska—Lincoln, Sheldon
Memorial Art Gallery and Sculpture
Garden—Lincoln, Nebraska
www.sheldon.unl.edu/default

Janice Driesbach
jdriesbach1@unl.edu
402-472-2461 t

Nelson-Atkins Museum of Art—Kansas City,
Missouri
www.nelson-atkins.org

Scott Stuart
sstuart@nelson-atkins.org
816-751-1278 x 3
816-561-7154 f

Oakland University Art Gallery—Rochester,
Michigan
www.oakland.edu

Jacky Leow
jaleow@oakland.edu
248-370-3005 t
248-370-4208 f

Philbrook Museum of Art—Tulsa,
Oklahoma
www.philbrook.org

Peggy Striegel, Marketing Consultant
pstriegel@philbrook.org
918-748-5385 t
918-743-4230 f

Saint Louis Art Museum—St. Louis,
Missouri
www.slam.org

Sid Goldstein
sgold@slam.org
314-721-0072 t
314-721-6172 f

Contemporary Art Museum St. Louis—St.
Louis, Missouri

www.contemporarystl.org
Jennifer C. Gaby, Manager of Public
Relations, Marketing and Events
jennifer.gaby@contemporarystl.org
314-535-4660 t
314-535-1226 f

Saint Louis University, Samuel Cupples
House and McNamee Gallery—St. Louis,
Missouri

www.slu.edu/the_arts/cupples/mcnamee
314-977-3025 t
Margaret Anthony
314-977-3575 t
314-977-3581 f

University of St. Thomas, Art Space
Gallery—Minneapolis, Minnesota
www.stthomas.edu

Sue Focke
sefocke@stthomas.edu
651-962-5560 t

651-962-6410 f

Snite Museum of Art, University of Notre
Dame—Notre Dame, Indiana
www.nd.edu/~sniteart

Gina Costa, Marketing & Public Affairs
Specialist
Gina.costa.6@nd.edu
219-631-4720 t
219-631-8501 f

Speed Art Museum—Louisville, Kentucky
www.speedmuseum.org

Penny Peavler
ppeavler@speedmuseum.org
502-634-2735 t
502-634-2727 f

Spencer Museum of Art—Lawrence, Kansas
www.ukans.edu/~sma

Sally Hayden, Public Relations Director
spencerart@ukans.edu
785-864-0135 t
785-864.3112 f

Sheldon Swope Art Museum—Terre Haute,
Indiana

www.swope.org
Nathan Richie, Curator of Collections and
Programs
richie@swope.org
812-238-1676 t
812-238-1677 f

Taft Museum of Art—Cincinnati, Ohio
www.taftmuseum.org

Tricia Suit, Public Relations Manager
tsuit@taftmuseum.org
513-684-4526 t
513-241-7762 f

Toledo Museum of Art — Toledo, Ohio
www.toledomuseum.org

Sara Stacy, Marketing Assistant
sstacy@toledomuseum.org
419-254-5771, x 7301
419-254-5773 f

University of Tulsa School of Art, Alexandre
Hogue Gallery—Tulsa, Oklahoma
www.utulsa.edu

Thomas Martin
lane-martin@utulsa.edu
918-631-2734 t
918-631-3423 f

Walker Art Center—Minneapolis,
Minnesota
www.walkerart.org

Karen Gysin, Associate Director, Public
Relations
karen.gysin@walkerart.org
612-375-7651 t
612-375-7618 f

Washington University Gallery of Art—St.
Louis, Missouri
www.artsci.wustl.edu/~artarch/artarch.html

Mark S. Weil, Director
Stephanie Parrish
Stephanie_Parrish@aismail.wustl.edu
mark_weil@aismail.wustl.edu
314-935-5490 t
314-935-7282 f

Wayne State University, The Elaine L. Jacob
Gallery—Detroit, Michigan
www.art.wayne.edu

Sandra Dupret
s.dupret@wayne.edu
313-577-2423 t
313-577-8935 f

Frederick R. Weisman Art Museum,
University of Minnesota—Minneapolis,
Minnesota

www.hudson.acad.umn.edu/WAMinfo
Ann Benrud, Director of Public Affairs
Benru001@umn.edu
612-625-9685 t
612-625-9630 f

West Bend Art Museum—West Bend,
Wisconsin

www.wbartmuseum.com
Thomas Lidtke
officemanager@wbartmuseum.com
262-334-9638 t
262-334-8080 f

Wichita Art Museum—Wichita, Kansas
www.wichitaartmuseum.org

Ashle Stratton, Public Relations Coordinator
pr@wichitaartmuseum.org
316-268-4985 t
316-268-4980 f

Leigh Yawkey Woodson Art Museum—
Wausau, Wisconsin

www.lywam.org
Marcia Theel
mtheel@lywam.org
museum@lywam.org
715-845-7010 t
715-845-7103 f

College of Wooster Art Museum—Wooster,
Ohio

www.acswooster.edu
Kitty McManus Zurko, Director
kzurko@acs.wooster.edu
330-263-2375 or 330-263-2495 t
330-263-2633 f

Wright State University, University Art
Galleries—Dayton, Ohio
www.wright.edu/artgalleries

Barbara Siwecki
Barabara.siwecki@wright.edu
937-775-2973 t
937-775-4082 f



Officers, Board and Committee Members as of October 1, 2006

Officers

President

Fred Smith (2008)

School of Art, Kent State University
Kent, OH 44242

Phone (330) 672-1369, Fax (330) 672-4729

E-mail: fsmith@kent.edu

Secretary

Jane Campbell Hutchison (2008)

University of Wisconsin-Madison
Chazen Museum of Art
800 University Avenue
Madison, WI 53706

Phone (608) 263-2349

E-mail: jchutchi@wisc.edu

Treasurer

Robert Randolph Coleman (2008)

Department of Art, Art History and Design
University of Notre Dame
109 Decio Faculty Hall

Notre Dame, IN 46556-5644

Phone (574) 631-8072

E-mail: Coleman.1@nd.edu

Past President

Judith W. Mann (2008)

The Saint Louis Art Museum
One Fine Arts Drive
St. Louis, MO 63110-1380

Phone (314) 655-5218, Fax (314) 721-6172

E-mail: judy.mann@slam.org

Archivist

Geraldine Fowle

Department of Art and Art History
University of Missouri-Kansas City
5015 Holmes

Kansas City, MO 63110-2499

Phone (816) 235-2993

E-mail: fowleg@umkc.edu

Founder

Charles D. Cuttler

1691 Ridge Road
Iowa City, IA 52245

Phone (319) 337-2208

E-mail: Charles-Cuttler@uiowa.edu

Board of Directors

Joseph Becherer (2007)

Frederik Meijer Gardens and Sculpture Park
1000 East Beltline NE
Grand Rapids, MI 49525

Phone (616) 977-7685, Fax (619) 957-5792

E-mail: jbecherer@meijergardens.org

Linnea S. Dietrich (2008)

Art Department NAB116
Miami University

Oxford, OH 45056

Phone (513) 529-7421, Fax (513) 529-1532

E-mail: dietrils@muohio.edu

Kate Ezra (2007)

Art & Design Department
Columbia College Chicago

6 S. Michigan Ave.

Chicago, IL 60605

Phone (312) 344-7749

E-mail: kate.ezra@att.net

Leesa Fanning (2007)

Nelson-Atkins Museum of Art
4525 Oak Street

Kansas City, MO 63112

Phone (816) 751-0414, Fax (816) 931-7208

E-mail: lfanning@nelson-atkins.org

Laura Gelfand (2008)

Myers School of Art
The University of Akron

Akron, OH 44325-7801

Phone (330) 972-8055, Fax (330) 972-5960

E-mail: lgelfan@uakron.edu

Patricia J. Graham (2009)

1641 Rhode Island Street
Lawrence, KS 66044

Phone, Fax: 785-841-1477

E-Mail: pgraham@ku.edu

Heidi J. Hornik (2009)

Baylor University
Department of Art

One Bear Place #97263

Waco, Texas 76798-7263

Phone: (254) 710-4548, Fax: (254) 710-1566

E-mail: Heidi_Hornik@baylor.edu

Gustav Medicus (2008)

School of Art
Art Building

Kent State University

Kent, OH 44242

Phone (330) 672-1364, Fax (330) 672-4729

E-mail: gmedicus@kent.edu

Sally Metzler (2008)

Field Museum

1400 S. Lake Shore Drive

Chicago, IL 60605

Phone (312) 922-9410

E-mail: smetzler@fieldmuseum.org

Robert Munman (2007)

Department of Art History
University of Illinois at Chicago

310A HH, 935 W. Harrison St.

Chicago, IL 60607

Phone (312) 996-5325, Fax (312) 413-2460

E-mail: munman@uic.edu

Marcella Sirhandi (2008)

Department of Art

Oklahoma State University

Stillwater, OK 74078

E-mail: marcela@okstate.edu

Jane Snyder (2007)

Department of Art

College of Creative Arts

P.O. Box 6111

45 Huckleberry Lane

West Virginia University

Morgantown, WV 26506

Phone (304) 594-0261

E-mail: Janet.Snyder@mail.wvu.edu

David Stark (2007)

Museum Education

Art Institute of Chicago

111 S. Michigan Avenue

Chicago, IL 60603

Phone: (312) 857-7134

E-mail: dstark@artica.edu

Paula Wisotzki (2008)

Loyola University

Fine Arts Department

6525 N. Sheridan Road

Chicago, IL 60626

Phone (773) 508-8306, Fax (773) 508-8008

E-mail: pwisots@luc.edu

Annual Conference Chair for 2007

Jennifer Lee

Herron School of Art and Design – IUPUI
Eskenazi Hall

735 W. New York Street

Indianapolis, IN 46202

Phone: (317) 278-9451

E-mail: jenlee@iupui.edu

Site Coordinator for Annual Conference

Judith Mann

(See Officers)

Committees

Awards

Kate Ezra

(See Board)

Leesa Fanning

(See Board)

Patricia J. Graham

(See Board)

Communications, Membership & Newsletter

Joseph Becherer

(See Board)

Heidi J. Hornik

(See Board)

Sally Metzler

(See Board)

Paula Wisotzki

(See Board)

Nominating

Linnea Dietrich

(See Board)

Robert Munman

(See Board)

Marcella Sirhandi

(See Board)

Publications

Randolf Coleman

(See Board)

Jane Hutchison

(See Officers)

Gus Medicus

(See Board)

2006 MAHS Graduate Student Award

The MAHS Graduate Student Presentation Award is granted to the best paper presented by a graduate student at the MAHS annual conference. Candidates are nominated by their panel chairs and the winning paper is selected by a committee of MAHS board members. The prize is generally a book in the winner's field of interest in art history.

The paper selected for the award at the 2006 conference in Dallas was by **April Jehan Morris**, a graduate student at Southern Methodist University, for her paper entitled "Balanced on a Blade: Images and Ideals of Templar Identity." It was presented on the panel "Forming Identity in Medieval Art" chaired by Pamela Patton of Southern Methodist University.

Morris's paper discussed the iconography of the mid-twelfth century frescoes at the chapel of the Knights Templar in Cressac (Charente, France), about which very little had previously been written. She showed how the images of Charlemagne, St. George, St. Michael, an unknown bishop, and Frankish warriors reinforced the dual secular and spiritual identities of the Templars as men of both warfare and prayer. Morris articulately and convincingly placed these Romanesque paintings with the context of the Templars' crusading ideals and communal activities. Members of the awards committee praised the paper for being "clear, well organized and jargon-free" and for providing an "original interpretation of the chapel's iconography, rather than rehashing other scholars' work." The Midwest Art History Society is honored to be able to support and encourage such excellent work by graduate students.



Kiki Smith, *Banshee Pearls*, 1991

12 four-color lithographs

Gift of Dr. and Mrs. Ronald J. Ross

Allen Memorial Art Museum, Oberlin College – Oberlin, Ohio

Upcoming Lectures

Peter F. Dorman, chairman, Department of Near Eastern Languages and Civilizations, and professor in Egyptology, The Oriental Institute, University of Chicago, will present *The Favorite Courtier: Senenmut and the Curious Kingship of Hatshepsut* on Friday, November 3, 2006, at the *Kimbell Art Museum*, Fort Worth, Texas.

On November 9, 2006, **Sanford Hirsch**, Executive Director of the Adolph and Esther Gottlieb Foundation, will speak in conjunction with an exhibition of Adolph Gottlieb's early prints at the *Allen Memorial Museum of Art*, Oberlin College.

On November 19, 2006, **Thelma Golden**, Director and Chief Curator of the Studio Museum in Harlem, will speak as part of series of talks at the *University of Michigan Art Museum* intended to explore what a university museum can be in the twenty-first century.

Robert Rosenblum will present *From Stubbs to Delacroix: Animal Liberation in Romantic Art* on November 30, 2006 at the *University of Iowa Museum of Art*. The lecture is held in conjunction with the exhibition *Animal Expressions: International Perspectives from the Collection*.

Alan P. Darr, curator of European sculpture and decorative arts, The Detroit Institute of Arts will present *Donatello and Terracotta Sculpture in the Renaissance* on December 8 at 6:00 pm. at the *Kimbell Art Museum*, Fort Worth, Texas.

Jenifer Neils of *Case Western Reserve University* will deliver the 2007 Hite Memorial Lecture in Art History at the *University of Louisville* on **March 1**. She will speak on the Parthenon and the politics of Pericles.

Calls for Submissions

Aurora, The Journal of the History of Art is seeking submissions for future issues. The journal publishes articles dealing with all time periods, cultures, media, and/or methodologies within the field of art history. Manuscripts to be considered should be sent to: Lillian H. Zirpolo, 255 Glen Road, Woodcliff Lake, New Jersey 07677 and Joanna Gardner-Huggett, Art Department, DePaul University, 1150 W. Fullerton Avenue, Chicago, Illinois 60614-2204. For further information, consult the journal's web site (www.arthistory.rutgers.edu/aurora).

Women's Arts News is seeking front-page, biographical articles about well-known women visual artists, from any time period, art movement, style or medium. Articles should be written for a general audience. As biographical essays, the submissions should contain factual information about the person's life; analysis of art work is not needed. Length is 700 words or fewer. Submission preferred via email at the web site (www.women-studiocenter.org). For more information call 718-361-5649.



**Midwest Art History Society 34th Annual Conference
Registration Form
March 28-31, 2007**

Hosted by Herron School of Art and Design | Indiana University-Purdue University Indianapolis in partnership with the Indianapolis Museum of Art and the Eiteljorg Museum of American Indians and Western Art

Name _____

Institution _____

Field of Specialty _____

Address _____ State _____ Zip _____

Daytime phone: (_____) _____ Email address _____

Conference Registration Fee (includes meeting materials, refreshments and receptions, and lunch on Thursday)

_____ Early Bird Member Fee (by February 23, 2007) \$115

_____ Late Member Fee (after February 23, 2007) \$140

_____ Student Fee (no late fee) \$35

Society Membership Fee (required with conference participation):

_____ Full membership \$45

_____ Student membership \$25

Contributions: Please make a generous contribution to the Charles D. Cuttler Student Travel Fund. The travel fund has been set aside to assist graduate student members of the Society who are delivering papers at the annual spring meeting. If you would like to compete for these limited funds, please complete the application on the MAHS website: mahsonline.org.

_____ Cuttler Student Travel Fund (\$_____)

Total Due: _____

Payment method:

_____ Check enclosed (make check payable in US\$ to: Midwest Art History Society)

or

Online registration and payment may be available at mahsonline.org

Hotel accommodations

Rooms are being held for the nights March 28, 29, 30, and 31 at the following three hotels. Please call the hotel directly and identify yourself as being with the Midwest Art History Society for the conference rate.

University Place Conference Center and Hotel (on the IUPUI campus). Rate of \$120 single or \$135 double plus tax applies until March 3. Call 1-800-627-2700 (Select Option #1) or (317) 269-9000.

Radisson City Center (nearby). Rate of \$129 single or double plus tax applies until February 25. Call (317) 635-2000.

Days Inn (short drive). Rate of \$86 single or double plus tax applies until February 28. Call (317) 637-6464.

For additional hotel choices and information about the city of Indianapolis: www.indy.org

For registration by mail, send this form with your payment to:

Jean Robertson, Associate Professor of Art History

Herron School of Art and Design | IUPUI

735 W. New York St., Indianapolis, IN 46202-5944

Questions?

Call or email Jean Robertson

Email: jrobert@iupui.edu

(317) 278-9483



Awards, Fellowships, Grants, and Honors

Karen Britt, assistant professor of Byzantine and Medieval art at the *University of Louisville*, has been awarded a U.S. Department of State Educational and Cultural Affairs Fellowship at the W. F. Albright Institute of Archaeological Research (Jerusalem) to support the completion of her book, *Heaven on Earth: The Role of Architectural Decoration in the Creation of Sacred Space*, which will be published by Peeters Press, Leuven.

Theresa Leininger-Miller received the Sarah Grant Barber Outstanding Academic Advising Award from the *University of Cincinnati* Undergraduate Academic Advising Association in May, 2006.

William R. Levin has been named H. W. Stodghill and Adele Stodghill Research Professor at *Centre College* for the fall semester 2006. He will use this opportunity to continue work on two articles addressing different

aspects of the Piazza del Duomo in Florence.

The *Allen Memorial Art Museum*, Oberlin College, announces that **Chung-Lan Wang** has been awarded a two-year Andrew W. Mellon Post-Doctoral Fellowship in Asian Art for the 2006-07 and 2007-8 academic years. Wang, who will be based at the museum, will teach a range of courses using the collections.

Would You Like to Serve on the MAHS Board?

All members of the Midwest Art History Society are invited to submit suggestions for new board members to members of the Society's Nominating Committee. Board members are elected on a rotating basis each spring for three-year terms. Anyone interested in serving, or who would like to suggest another member for consideration, should contact a member of the Nominating Committee.

Midwest Art History Society
Paula Wisotzki, Editor
School of Art, Kent State University
Kent, Ohio 44242

Non-profit
Organization
U.S. Postage
PAID
Kent, OH
44240
Permit No. 2